

KIRILL BRUSILOVSKY SELECTED WORKS

STATIONARY



Business papers, folder, CD-ROM and image brochure



Styleguide page



Advertisement

Client **Phenomedia AG**

Agency **crossmind communications**

Tasks

Complete corporate design development, including a design styleguide.

Stationary design, including business papers, postcards and image brochure.

Occupation **Art Director**



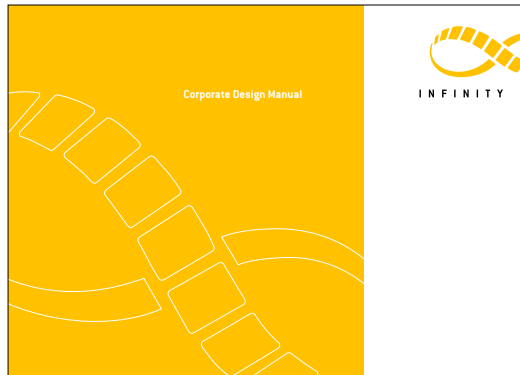
3D postcard

KIRILL BRUSILOVSKY SELECTED WORKS

STATIONARY



Business cards



Corporate Design Styleguide



Letters (front/back)

Client **Infinity Filmverleih**

Agency **crossmind communications**

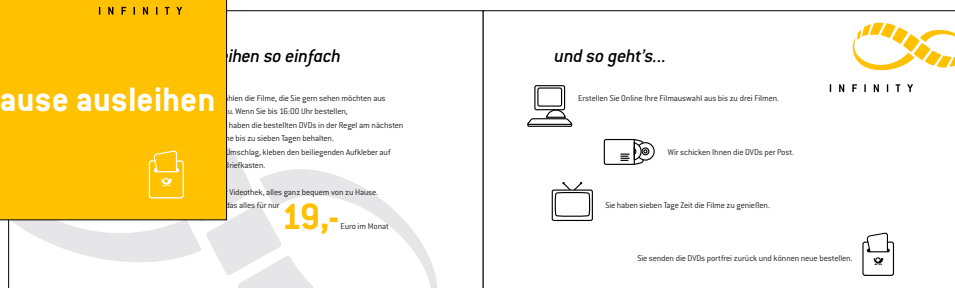
Tasks

Complete corporate design development, including a design styleguide. Stationary design, including business papers, postcards and flyer.

Occupation **Art Director**

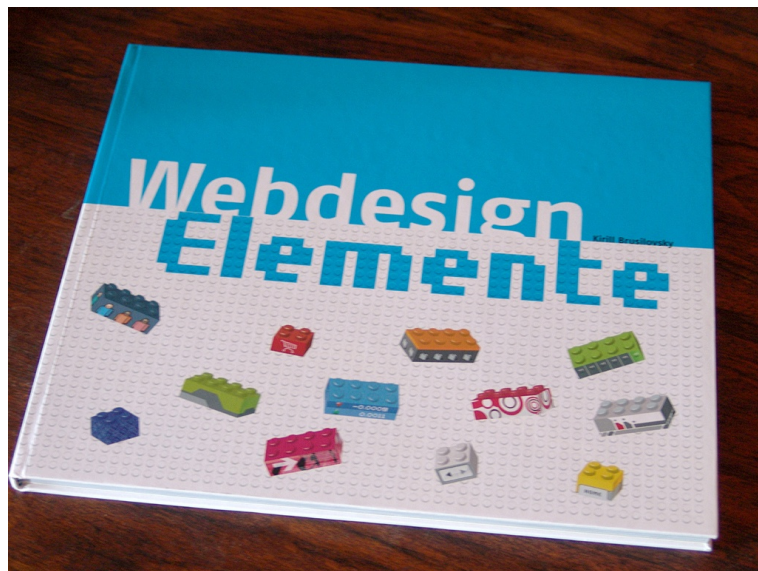


Leaflet



KIRILL BRUSILOVSKY SELECTED WORKS

EDITORIAL



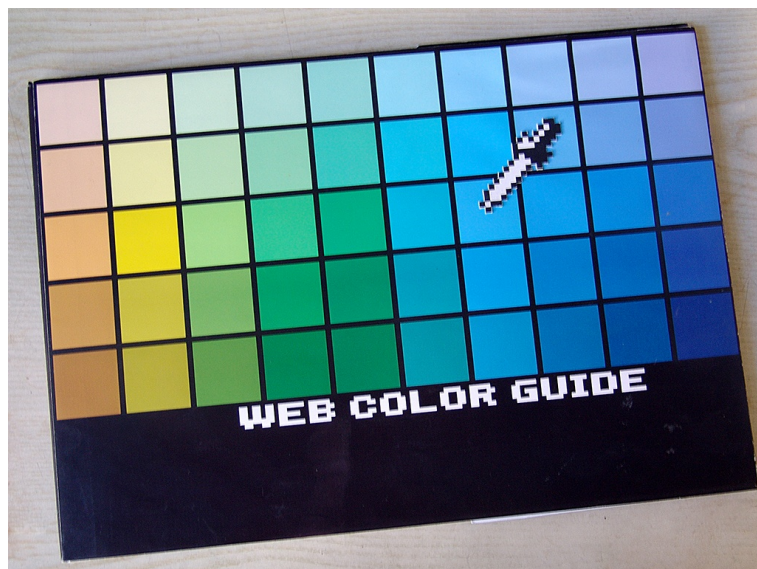
Project
Book "Webdesign-Elemente" (German).
Survey on the history and current trends
in web design. 116 pages.

Occupation
Research, text, design,
layout and publishing coordination.

complete book is available as PDF under
http://www.crossmind.de/books/webdesign_elemente.pdf

KIRILL BRUSILOVSKY SELECTED WORKS

EDITORIAL



Project
Book "Web Color Guide" (English).
Survey on the use of color in web design.
50 pages.

Occupation
Research, text, design, layout.

complete book is available as PDF under
<http://www.crossmind.de/books/webcolorguide.pdf>

KIRILL BRUSILOVSKY SELECTED WORKS
EDITORIAL



Project
Naming and visual concept for an entertainment magazine.

Occupation Designer

Cover drafts



KIRILL BRUSILOVSKY SELECTED WORKS

EDITORIAL



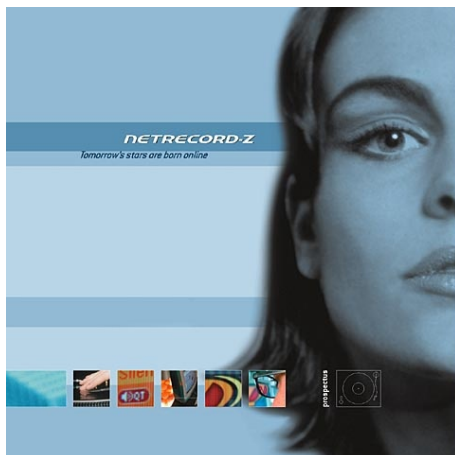
Client **W.I.S. Sicherheit Holding**

Agency **crossmind communications**

Tasks

Design and photography for several printed objects including image brochure, product leaflets and various print ads.

Occupation **Art Director**



Cover

Client **Netrecord-z AG**

Agency **crossmind communications**

Tasks

Design and production of an image brochure. The brochure has a vinyl format and size and special gleaming paper was chosen to underline the company's exclusivity.

Occupation **Art Director**

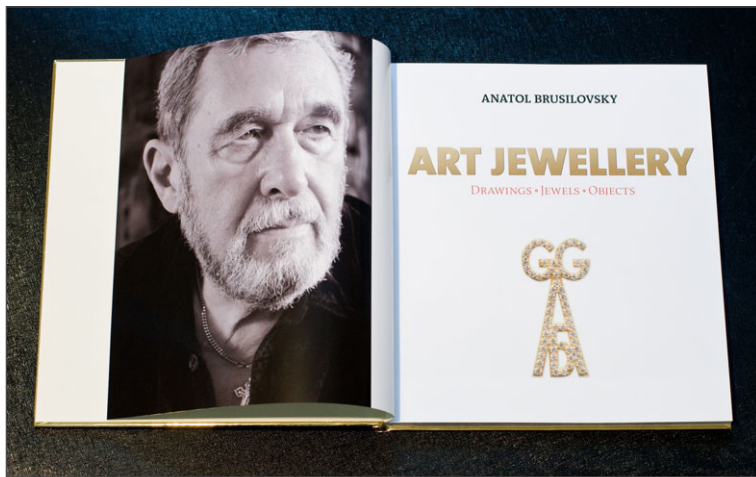


Split

KIRILL BRUSILOVSKY SELECTED WORKS
EDITORIAL



Gold foil cover with blind stamp and white screen print



Project
Catalogue "ART JEWELLERY"

Agency **crossmind communications**

Occupation
Design, layout, portrait and object
photography, publishing coordination.

